

R7 Superiore alle normative **DIN-24951 - SAE 100R7 - ISO 3949.1**
Over the requirement of **DIN-24951 - SAE 100R7 - ISO 3949.1** norms

Serie **S019050**



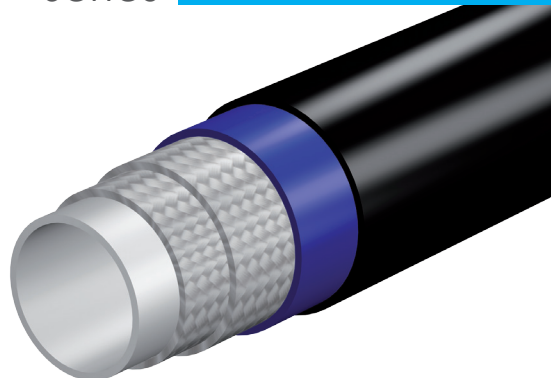
POLIAMMIDE 12
Polyamide 12
Polyamid 12



N. 2 STRATI DI FILATO IN FIBRA SINTETICA AD ALTA TENACITÀ
2 layers of braided high-resistance syntetic fibers
2 hochfeste Polyestergeflechte



POLIURETANO ANTIABRASIONE GUAINA ESTERNA IN PVC
Anti-abrasion polyurethane Additional PVC cover
Polyurethan abriebfest PVC Ummantelung



DATI TECNICI

Technical Specifications • Technische Daten

INCH		mm		MPa			bar			psi			mm		gr/m
INCH	mm	mm		MPa	bar	psi	MPa	bar	psi	bar			mm	gr/m	
3/16	5,0	15,3	S019050B	22,0	220	3190	88	880	12760	440	4:1	±1,5%	30	64,0	
1/4	6,6	18,5	S019050C	21,5	215	3117	86	860	12470	430	4:1	±1,5%	35	116,0	
5/16	8,0	20,3	S019050D	19,5	195	2827	78	780	11310	390	4:1	±1,5%	45	137,0	
3/8	9,7	22,5	S019050E	18,7	187	2711	75	750	10875	375	4:1	±1,5%	75	171,0	
1/2	13,0	26,5	S019050F	15,7	157	2276	63	630	9135	315	4:1	±1,5%	95	250,0	

TEMPERATURE TEMPERATURE RANGE TEMPERATURBEREICH

Per solventi, vernici, fluidi idraulici
For solvents, paints, hydraulic fluids
Für Lösungsmittel, Farben und
Hydrauliköle
-40°C (-40°F); +93°C (+199°F)

RACCORDI FITTINGS ARMATUREN

A pressione e recuperabili
Swage and reusable fittings
Preß- und Schraubarmaturen

POSSIBILI APPLICAZIONI APPLICATIONS ANWENDUNG

Trasporto in media pressione di
solventi e vernici con prescrizione di
alto isolamento
Medium pressure solvent with high
insulation
Mitteldruckanwendungen bei hoher
Isolationsanforderung



DIAMETRO INTERNO
Hose I.D. • Innendurchmesser



DIAMETRO ESTERNO
Hose O.D. • Außendurchmesser



CODICE
Part Number • Artikel-nr



PRESSIONE MINIMA DI SCOPIO
Minimum Burst Pressure
Minimaler Berstdruck



PRESSIONE MAX DI LAVORO
Maximum Working Pressure
Maximaler Betriebsdruck



PRESSIONE DI PROVA
Test Pressure • Prüfdruck



COEFFICIENTE DI SICUREZZA
Safety Factor • Sicherheitsfaktor



ALLUNGAMENTO A PRESSIONE DI ESERCIZIO
Change in Length At Working Pressure
Längenänderung Bei Betriebsdruck



MINIMO RAGGIO DI PIEGATURA MECCANICA
Minimum Mechanical Bending Radius
Kleinster Biegeradius Mechanisch



PESO
Hose Weight • Gewicht

NOTE NOTES • BEMERKUNGEN

I dati indicati sono riferiti a condizioni standard di prova (23°C+/-5°C)
Features are referred to standard laboratory conditions (23°C+/-5°C)
Die Daten beziehen sich auf Standardprüfbedingungen (23°C+/-5°C)